



Insulated Bldg with one Left Extension Kit

## 13' x 10' Flat Roof Insulated Cabin

The DuraMax Insulated Building is an energy efficient modular insulated building. The walls are manufactured with durable, coil coated galvanized steel that contains a fire-retardant CFC Free B2 Poly-Urethane insulation. This construction provides a strong, long lasting wall that reduces heat gain in summer or heat loss in winter.

These buildings are ideal for all weather conditions and can be used for various purposes, such as additional living space, an office, a hobby room, a secure storage space, or an equipment enclosure.

- Strong & Secure Cabin
- Metal Cladded Insulated Walls
- Will Not Rust, Rot, or Mildew
- Smooth Exterior and Interior Wall Finish
- Tall Walk-in Building (82 5/8" Tall)
- Wide 36 1/4" Door with Keyed Lock
- Corrugated Insulated Roof
- Can be Mounted Directly on a Concrete Floor
- Shelving can be Mounted Easily on All Wall Panels
- Easily Expandable on Either Left or Right Side
- Angular Roof Design with Rear Water Drainage System
- Industry's Longest 7 Year Limited Warranty

## FLAT ROOF INSULATED CABIN



Left Angle View



Front View



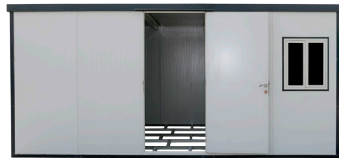
Right Angle View



Roof Top View



Back View



With One Left Extension Kit Added



With One Right Extension Kit Added

### Flat Roof Insulated Cabin Dimensions

| Model No. | Approx. Size (Ft.) | Storage                    | Exterior Dimension (inches) |                   |              | Interior Dimensions | Door Opening | Panel Color                    |       |       |
|-----------|--------------------|----------------------------|-----------------------------|-------------------|--------------|---------------------|--------------|--------------------------------|-------|-------|
|           |                    |                            | Base                        | Roof Edge to Edge | Wall to Wall |                     |              |                                |       |       |
| 30432     | 13' x 10'          | 129 Sq. Ft.<br>887 Cu. Ft. | Width                       | 159 ¼"            | 162 ¼"       | 156 ⅞"              | 36 ¼"        | Off-White with Anthracite Trim |       |       |
|           |                    |                            | Depth                       | 120 ⅝"            | 126 ⅝"       |                     |              |                                |       |       |
|           |                    |                            | Height                      |                   | 92"          |                     |              |                                | 82 ⅝" | 82 ¾" |
|           |                    |                            |                             |                   |              |                     |              |                                |       |       |

### Flat Roof Insulated Building One Extension Dimensions (Mountable on either Left or Right Side)

| Model No. | Approx. Size (Ft.) | Storage                        | Exterior Dimension (inches) |                   |              | Interior Dimensions | Panel Color                    |        |  |
|-----------|--------------------|--------------------------------|-----------------------------|-------------------|--------------|---------------------|--------------------------------|--------|--|
|           |                    |                                | Base                        | Roof Edge to Edge | Wall to Wall |                     |                                |        |  |
| 34432     | 10' x 3.3'         | 32.29 Sq. Ft.<br>223.5 Cu. Ft. | Width                       | 39 ½"             | 39 ½"        | 39 ½"               | Off-White with Anthracite Trim |        |  |
|           |                    |                                | Depth                       | 120 ⅝"            | 126 ⅝"       |                     |                                | 118 ¼" |  |
|           |                    |                                | Height                      |                   | 92"          |                     |                                | 82 ⅝"  |  |
|           |                    |                                |                             |                   |              |                     |                                |        |  |

### Packaging - Flat Roof Insulated Cabin

| SKU#  | Pack   | Contents  | Package      | Size (Inches)      | Weight (Pounds) |
|-------|--------|---|--------------|--------------------|-----------------|
| 30432 | 1 of 2 | Wall Panels, Door & 1 window                          | Wooden Frame | 89" x 45" x 25"    | 743 lbs.        |
| 30432 | 2 of 2 | Roof Panels, Metal Profiles, Foundation & Accessories | Wooden Frame | 124" x 46" x 11.5" | 628 lbs.        |

### Packaging - Flat Roof Insulated Cabin One Extension Kit

|       |   |                                    |              |                 |          |
|-------|---|------------------------------------|--------------|-----------------|----------|
| 34432 | 1 | Wall & Roof Panels, Metal Profiles | Wooden Frame | 124" x 45" x 9" | 407 lbs. |
|-------|---|------------------------------------|--------------|-----------------|----------|

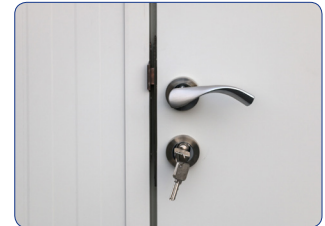
The building is packaged in a heavy duty cardboard box, on a wooden frame. The packaging includes all components, hardware and an illustrated step-by-step instruction booklet. Shipped common carrier and requires lift gate for residential delivery.

### Product Assembly

| Approx. No. of Hrs | Person Needed | Product   |
|--------------------|---------------|---|
| 6                  | 2             | Flat Roof Insulated Bldg                        |
| 9                  | 2             | Flat Roof Insulated Bldg with one Extension Kit |

Please refer to the Owner's Manual for more detail; available also at [www.duramaxbp.com](http://www.duramaxbp.com)  
Need Help? Call 800-483-4674 or Email: [support@uspolymerinc.com](mailto:support@uspolymerinc.com)

## FEATURES



Door Handle & Deadbolt Lock Included



Building Reinforced with Metal Columns and Beams.  
○ Panel Walls are Fire-retardant CFC Free Poly-Urethane Insulation.



Galvanized Metal Foundation Kit Included



One Window Kit Included



Rear Roof Rain Gutter System



### CHECKLIST Prior to Building Purchase

- Check with your local city hall for building ordinances & CCR's.
- Be sure that intended placement of building is within your property lines.
- Do not construct building over utility lines (gas, electrical, water, telephone, cable, etc).
- Measure the size of the intended building site for ample space and make sure you have a level wooden or concrete foundation.

