

Gate Kit Assembly Instructions



Gate Lock and Hinges are not included

PLEASE READ THESE INSTRUCTIONS BEFORE ASSEMBLY

During assembly, vinyl components should be laid on a non-abrasive surface (i.e. cardboard or drop cloth) so as not to scratch.

- Use care when applying PVC cement, as it dries quickly. Vinyl should be cleaned with a mild detergent and non-abrasive cleaning pad or sponge.
- Vinyl components should be assembled without using excessive force, to avoid breakage.
- Assemble gate after fence installation, to accurately locate hinge and latch post and proper width size.
- Gates should not be made any wider than 48", to avoid sagging from hinge post.
- All hinge posts, properly installed, should have steel insert and be filled at least 75% with concrete.
- Cut Top and Bottom rail 2" shorter than distance between hinge and latch post.

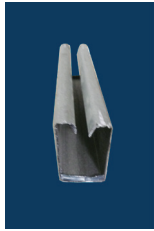
For Example: If the gate opening is 44" cut Top and Bottom rail to 42".

TOOLS NEEDED

- Measuring Tape / Ruler
- Pencil
- Screw Driver (Phillips #2)
- Drill with $\frac{3}{16}$ " bits
- Drop Cloth
- Square Level
- Rubber Mallet

Have Questions?
Call us at 1-800-483-1361

Step 1 Pocket Rail Metal Support Installation



Pocket Rail Metal Support
(4 Pieces Included)



Figure 1

Insert tightly the Metal Pocket Rail support into the empty bottom slot of the Pocket Rails on both end sides of the top and bottom Pocket Rail (x4). (Figure 1)

Step 2 End Channel Installation

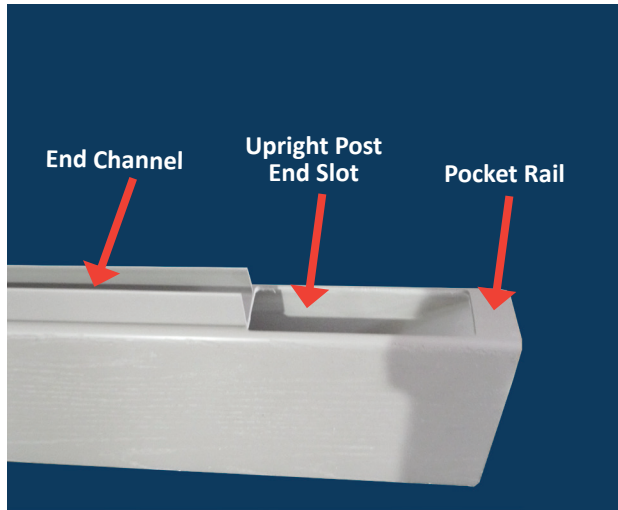


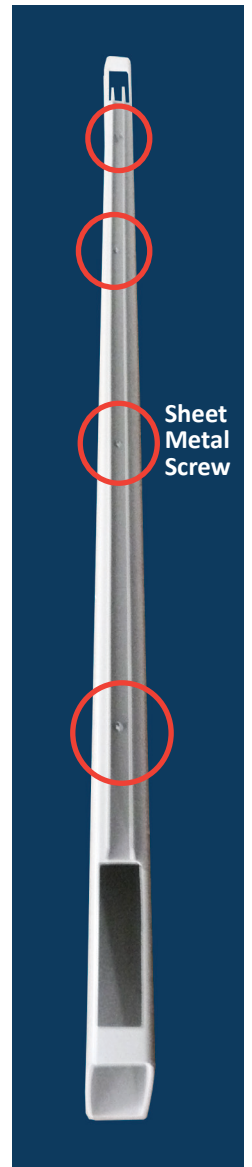
Figure 2a

Mount the End Channel on top of the Upright Post, as shown in Figure 2a.



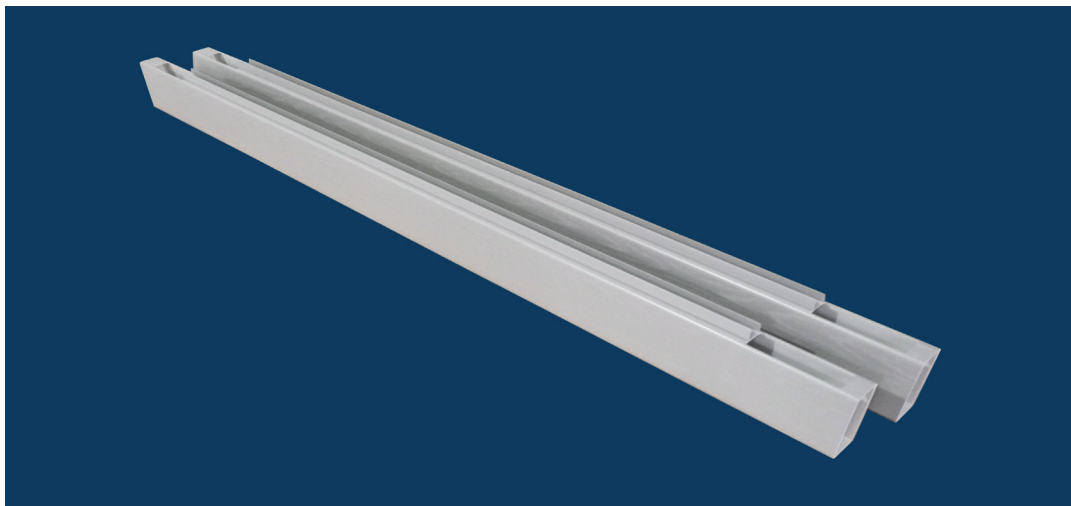
Figure 2b

Fasten the End Channel to the Upright Post using (4x) Sheet Metal Screw as shown in Figure 2b & 2c.



Sheet Metal Screw

Figure 2c



Completed Upright Posts with the mounted End Channel.

Step 3 Picket and Rail Installation

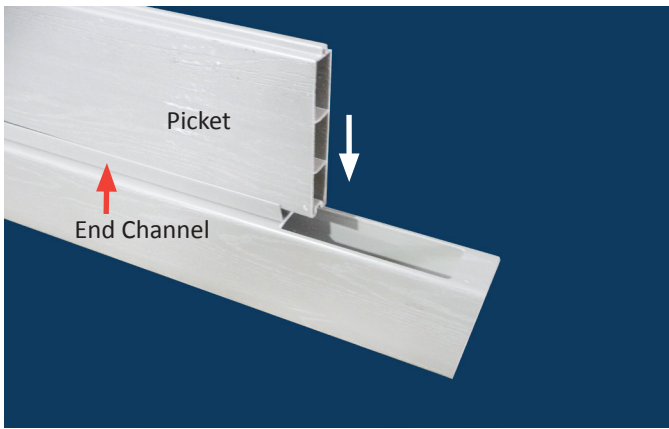


Figure 3a

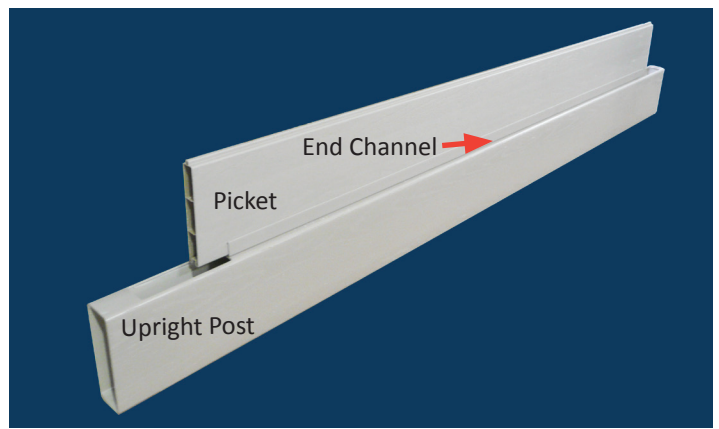


Figure 3b

Slide a Picket into the End Channel as shown in Figure 3a & 3b.

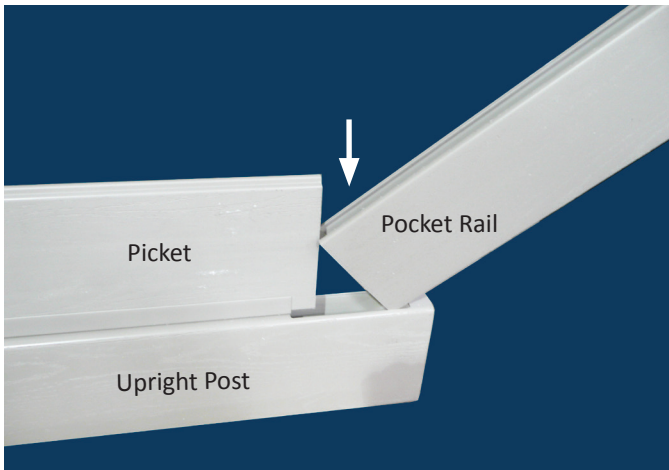


Figure 3c

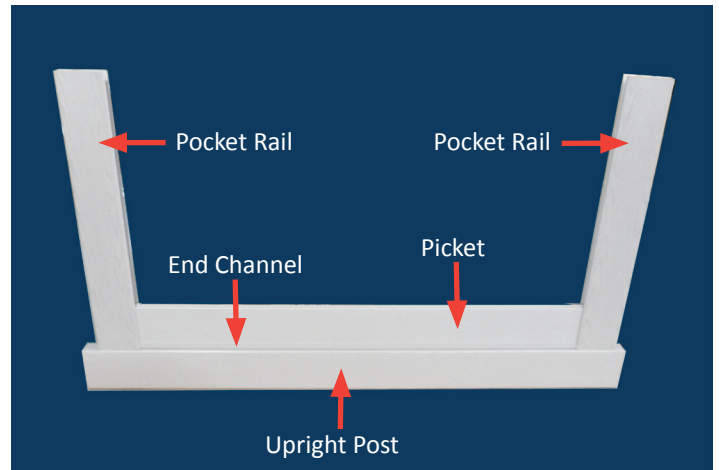


Figure 3d

Insert the Pocket Rail to the Upright Post slot and at the same time slide the Pocket Rail groove into the picket, as shown in Figure 3c. Then do the same procedure for the other side Upright Post (Figure 3d).

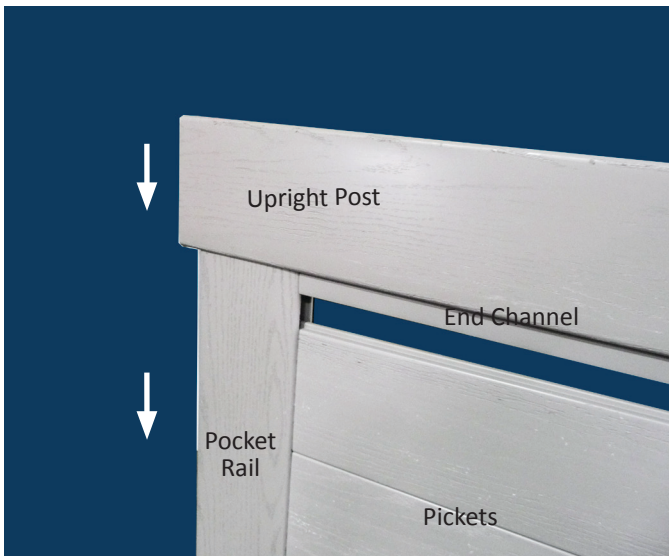


Figure 3e

Slide the remaining Pickets in between the 2 Pocket Rail grooves and the last Upright Post (Figure 3e).

IMPORTANT



Use a Square Level for all the corners for proper leveling and alignment before doing **Step 4**.

Step 4 Uprights Post Metal Support Installation

Corner Lip
Uprights Metal Support
(4 Pieces Included)

Figure 4a
Insert one Uprights Post Metal Support into one of the Uprights Post End Corner (Figure 4a); make sure the corner lip of the Uprights Post Metal Support is facing towards the Pocket Rail.

Figure 4b
Using the 1/2" metal sheet screw, drive the Sheet Metal Screw (2x) into the 2 pre-drilled holes. (Figure 4b) The top and bottom of the 2 Upright Posts must have the Post Metal Support (4x).

Step 5 Secure Uprights Post and the Pocket Rail with Sheet Metal Screws

Vinyl Screw Cap
(32 pcs included)

1 1/2" Pan Head Sheet Metal Screw
(32 pcs included)

Figure 5a
Figure 5b
Figure 5c

Pre-measure and pre-drilled all 4 corners of Upright Post, on both sides top and bottom, for the Sheet Metal Screw (Figure 5a & 5b). Drive the Sheet Metal Screw into the Upright Post in 4 spots (Figure 5c) then cover the Sheet Metal Screw head with the Vinyl Screw Cap. (Figure 5d)



Figure 5d



Figure 6

Put a small amount of Vinyl Glue on all sides of the Post Cap and gently tap the Post Cap into the top of the Uprights Post and wipe off any excess Vinyl Glue with damp cloth (Figure 6). Repeat the same procedure for the other 2 Upright Post Caps.

